

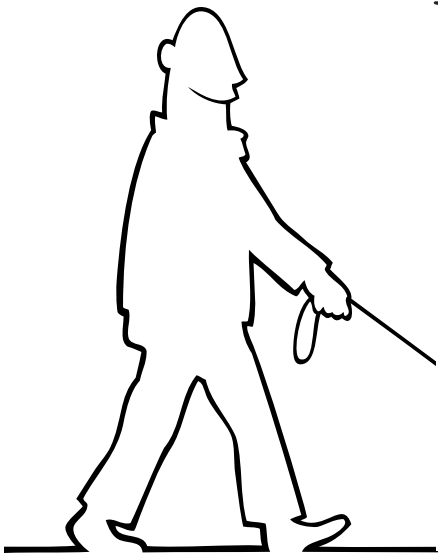
IT'S ALL ABOUT

**LINE**

KITCHENTABLECLASSROOM.COM

A LINE IS A DOT THAT WENT FOR A WALK...

A LINE IS JUST A PATH CREATED BY A MOVING POINT.  
IMAGINE WHERE THIS MAN'S LINE COULD GO!"



KITCHENTABLECLASSROOM.COM

# LINE DIRECTIONS, DRAW YOUR OWN...

VERTICAL LINES  
GO STRAIGHT UP  
AND DOWN

HORIZONTAL  
LINES RUN LEFT  
TO RIGHT ACROSS  
THE PAGE

DIAGONAL  
LINES ARE SET AT  
AN ANGLE.

KITCHENTABLECLASSROOM.COM

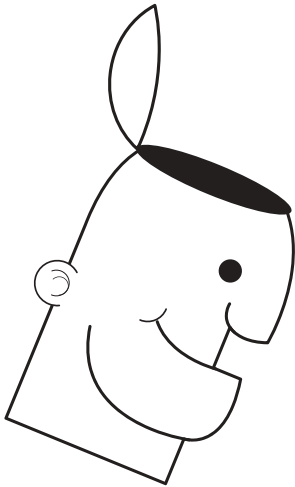
# THERE ARE LOTS OF KINDS OF LINES...

THICK, THIN, WAVY, JAGGED ARE JUST A FEW. FILL THE SQUARES WITH AS MANY KINDS OF LINES AS YOU CAN THINK OF.


KITCHENTABLECLASSROOM.COM

# LINES CAN SHOW FEELINGS....

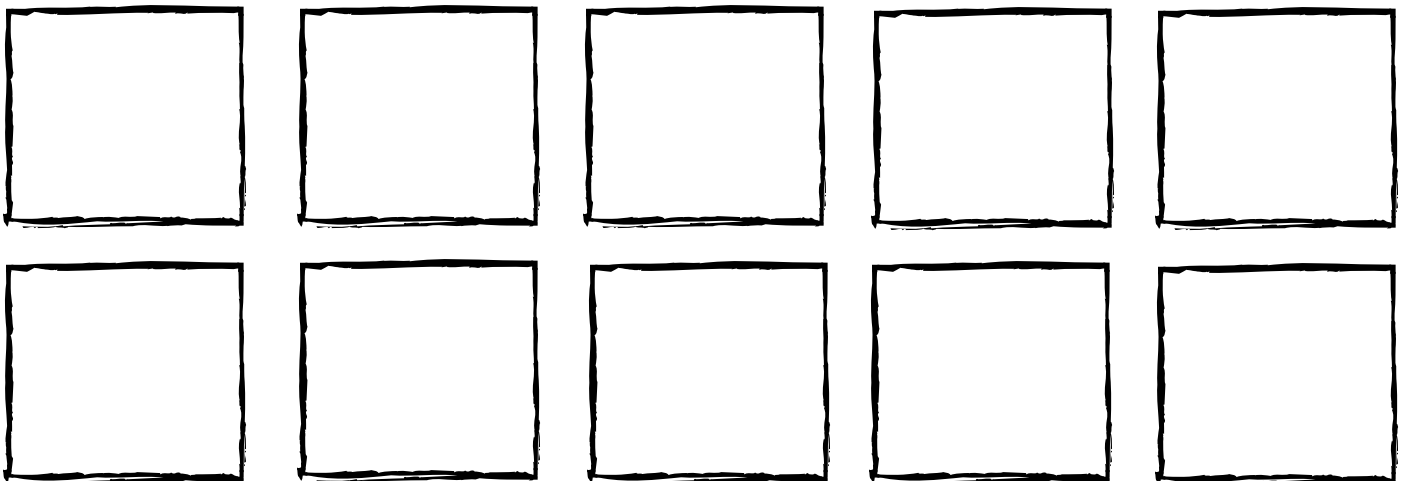
IMAGINE WHAT KIND OF LINES BEST EXPRESS YOUR FEELINGS RIGHT NOW.



KITCHENTABLECLASSROOM.COM

# THE POWER OF REPEATING...

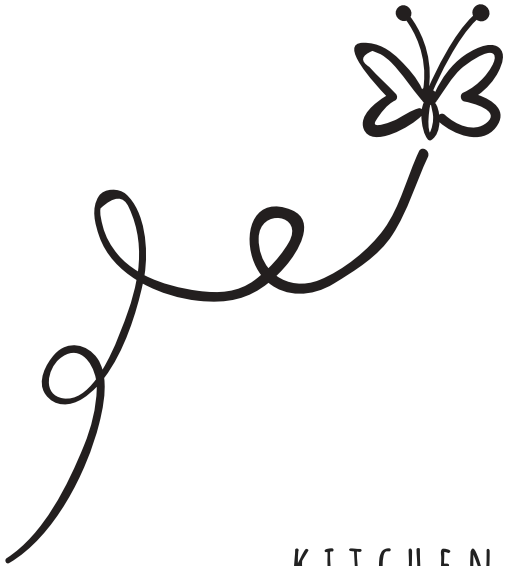
REPEAT SIMPLE LINES TO CREATE NEW PATTERNS IN EACH SPACE.



KITCHENTABLECLASSROOM.COM

## LINES CAN SHOW MOTION...

DRAW SOMETHING "IN MOTION" AND ADD LINES TO SHOW WHERE IT'S BEEN OR HOW IT IS MOVING.



KITCHENTABLECLASSROOM.COM

## A LINE CLOSES TO CREATE A SHAPE.....

DRAW SOME EXAMPLES OF "CLOSED" LINES.

KITCHENTABLECLASSROOM.COM